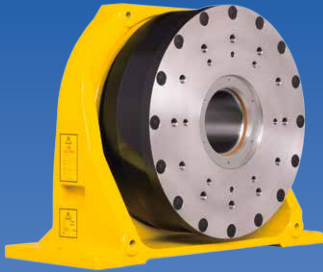


# FANUC Positioner



1-axis positioner



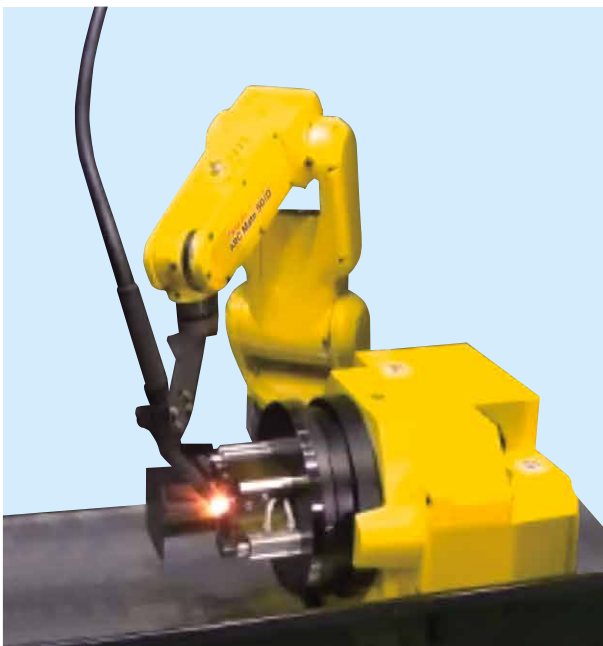
2-axis positioner

## Features

This is the Positioner for robot system. The positioner can move with high speed, high accuracy, and high payload by using the same drive unit as a robot.

- A coordinated motion function integrated into FANUC Robot makes it possible to keep optimized constant relative speed and posture.
- The positioner is realized a compact body with improved allowable moment, inertia, and load capacity.
- For 2-axis positioner, a welding earth cable and plenty piping/wiring are integrated into a hollow drive mechanism. For 1-axis positioner, a hollow type and a small type are available.
- For 1-axis positioner, a follower unit is available, and a long part can be welded. Also the continuous turn option of welding earth cable and plenty piping/wiring is available.
- ROBOGUIDE is used to create a coordinated motion program easily.
- The positioner can be installed on the floor, upside-down or inclined at any angle.

## Application system



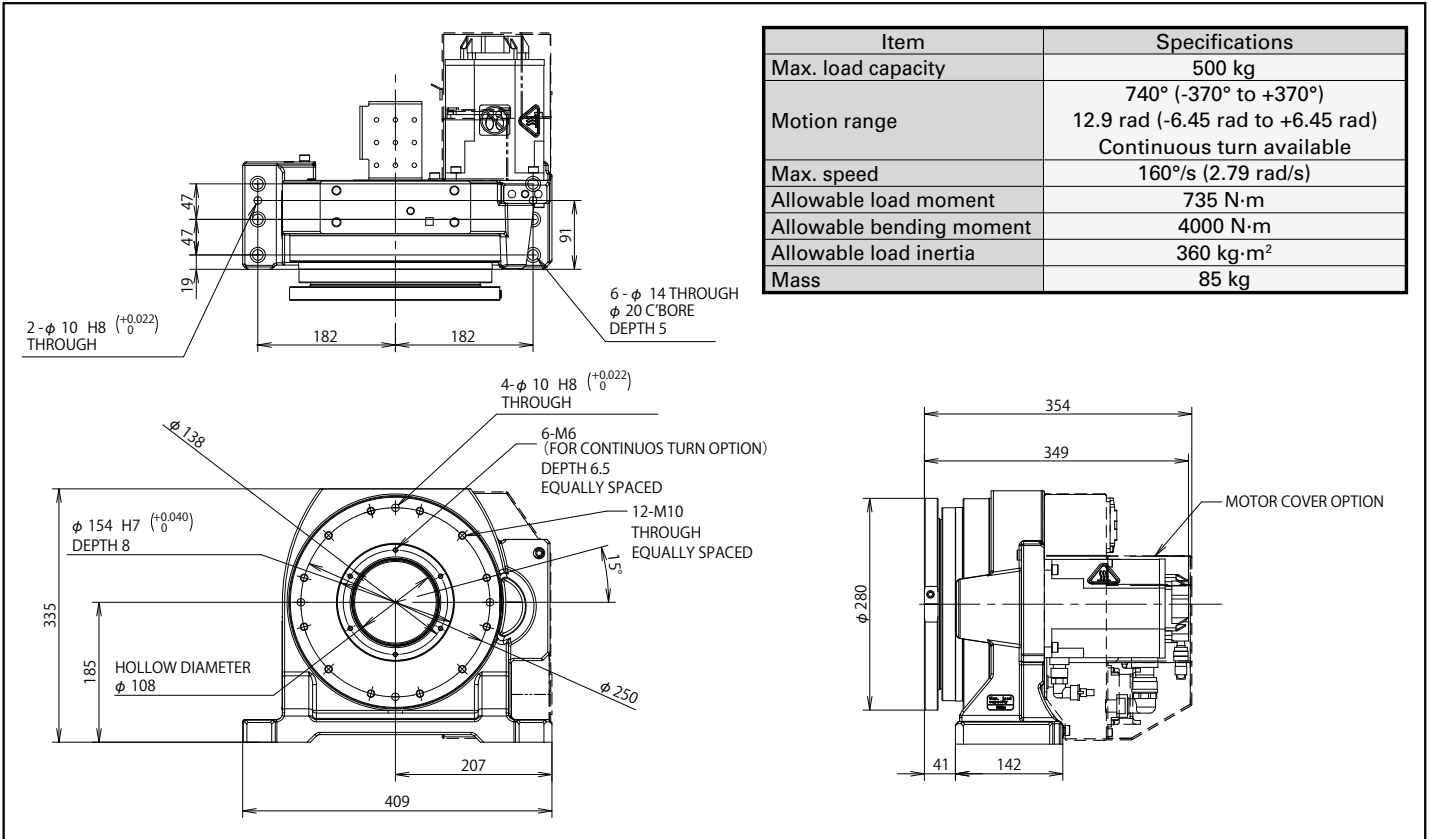
Aluminum part arc welding with 1-axis positioner with continuous turn option installed



Automobile part arc welding with 2-axis positioner

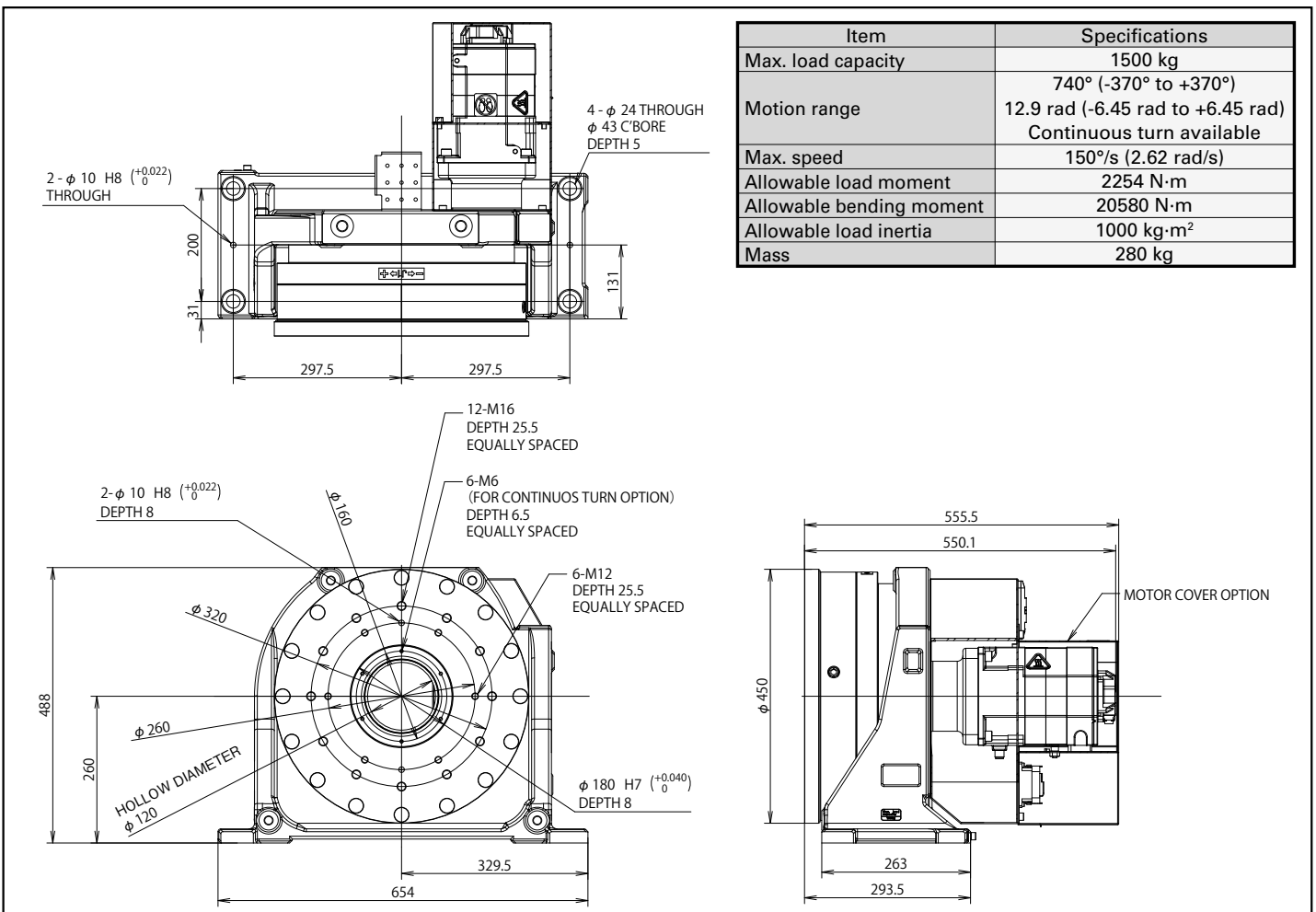
# 1-axis positioner for 500kg payload(hollow type)

## Specifications and Outer Dimensions



# 1-axis positioner for 1500kg payload(hollow type)

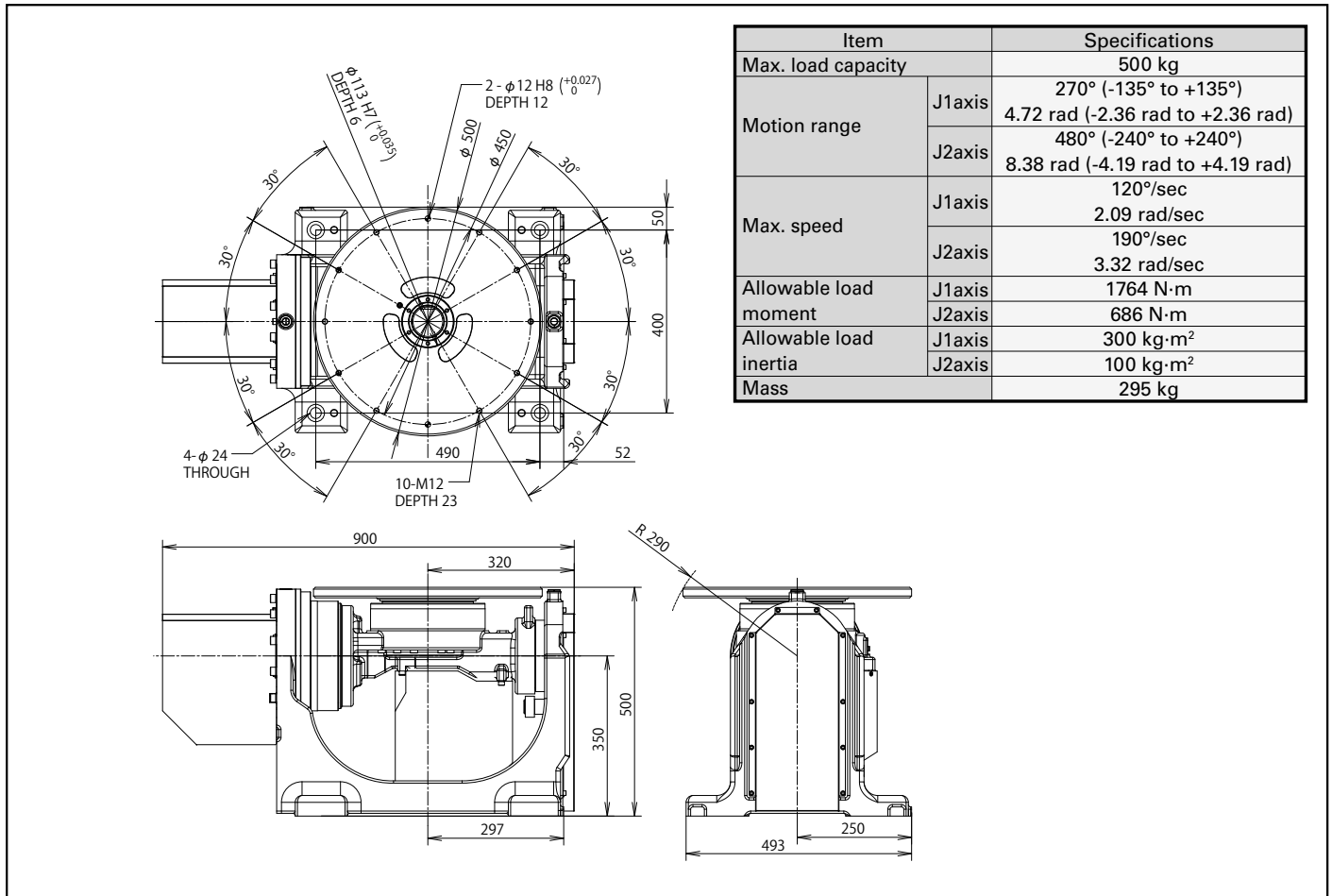
## Specifications and Outer Dimensions





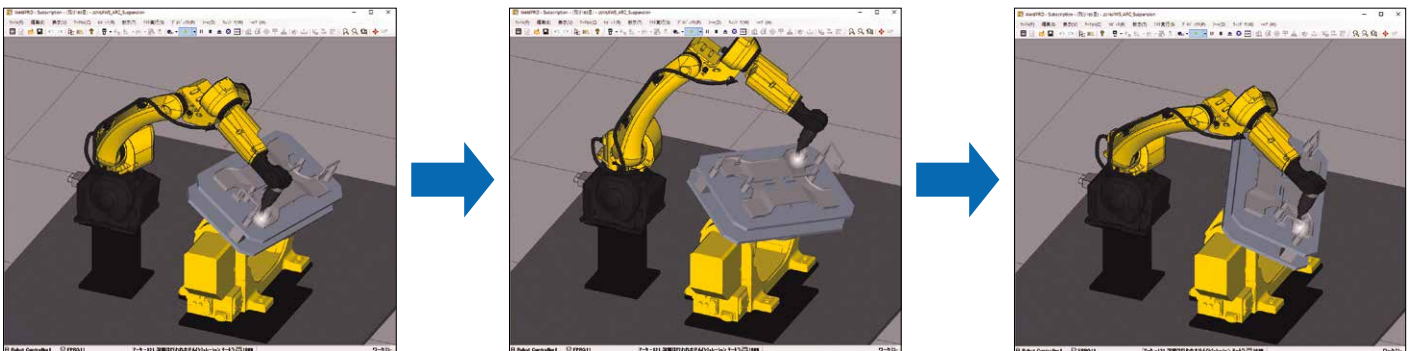
# 2-axis positioner

## Specifications and Outer Dimensions



## ROBOGUIDE Offline Teaching

Multi-arm coordinated motion is generated by ROBOGUIDE.



## FANUC CORPORATION

•Headquarters Oshino-mura, Yamanashi 401-0597, Japan  
Phone: (+81)555-84-5555 <https://www.fanuc.co.jp/>

•Overseas Affiliated Companies  
FANUC America Corporation  
FANUC Europe Corporation, S.A.  
SHANGHAI-FANUC Robotics CO., LTD.  
KOREA FANUC CORPORATION  
TAIWAN FANUC CORPORATION  
FANUC INDIA PRIVATE LIMITED  
FANUC SINGAPORE PTE. LTD.  
FANUC THAI LIMITED  
FANUC MECHATRONICS (MALAYSIA) SDN. BHD.  
PT. FANUC INDONESIA  
FANUC OCEANIA PTY. LIMITED  
FANUC SOUTH AFRICA (PROPRIETARY) LIMITED

Phone: (+1)248-377-7000  
Phone: (+352)727777-1  
Phone: (+86)21-5032-7700  
Phone: (+82)55-278-1200  
Phone: (+886)4-2359-0522  
Phone: (+91)80-2852-0057  
Phone: (+65)6567-8566  
Phone: (+66)2-714-6111  
Phone: (+60)3-3082-1222  
Phone: (+62)21-4584-7285  
Phone: (+61)2-8822-4600  
Phone: (+27)11-392-3610

<https://www.fanucamerica.com/>  
<https://www.fanuc.eu/>  
<https://www.shanghai-fanuc.com.cn/>  
<https://www.fkc.co.kr/>  
<https://www.fanuctaiwan.com.tw/>  
<https://www.fanucindia.com/>  
<https://www.fanuc.com/fsp/>  
<https://www.fanuc.com/ftth/>  
<https://www.fanuc.com/fmm/>  
<https://www.fanuc.com/fin/>  
<https://www.fanucoceania.com.au/>  
<https://fanuc.co.za/>

•All specifications are subject to change without notice.  
•No part of this catalog may be reproduced in any form.  
•The products in this catalog are controlled based on Japan's "Foreign Exchange and Foreign Trade Law". The export from Japan may be subject to an export license by the government of Japan. Further, re-export to another country may be subject to the license of the government of the country from where the product is re-exported. Furthermore, the product may also be controlled by re-export regulations of the United States government. Should you wish to export or re-export these products, please contact FANUC for advice.

© FANUC CORPORATION, 2015

Positioner(E)-03a, 2021.9, Printed in Japan